



The Future is Now Campaign



The Indiana Theta Chapter of Sigma Phi Epsilon is moving into the 21st century at an accelerated rate. Trine University has placed a tremendous emphasis on modern living accommodations with the construction of new dorms equipped with the latest in technology and all the creature comforts of home to meet the demands from the students of today. Our fraternity needs to meet this challenge head-on and proactively move forward with the construction of a new house to ensure the values and traditions of the Indiana Theta chapter of Sigma Phi Epsilon are engraved in the book of time forever. The grains of sand have slipped through the hour glass. The time has now come to invert the hour glass and start anew.

The Campaign

The dream of a new house will soon become a reality at 115 South Darling Street. Ground was broken on June 12th, 2008 with the demolition of the old house. The scheduled completion date of the new house is set for January 2009. Please visit www.lambdahouse.org to see progress pictures and more details of this monumental event.

We are very excited about this opportunity, however, a lot more work needs to be done and we need your help to succeed. The construction project is ambitious – we need to raise \$1.3 million dollars. The new house will provide first class accommodations in line with the University while providing the actives with an opportunity to be a part of the best fraternity on campus. Denise Stump, the wife of Brother Jim Stump, summed-up the meaning of what the Sigma Phi Epsilon house did for her and her husband when she said “For many of us this is where our life really began.” Many of the life lessons we use daily started in the House with the Red Door.

Our campaign is really quite simple: we have approximately 600 alumni and for various reasons we estimate approximately 400 alumni will be able to make a contribution to the campaign. Please consider what Sigma Phi Epsilon did for you and help make this dream a reality for generations to come.

While all donations will be accepted we are seeking a minimum pledged amount of \$3,250 per person payable over a five (5) year pledge period. This breaks down to only \$1.78 per day. Your commitment to help your fraternity will forever change the face of the Indiana Theta Chapter of Sigma Phi Epsilon. All donations are tax deductible per IRS guidelines under the fraternity 501C(3) tax filing status. All contributions received after our goal has been met will go into an endowment for maintenance of the house and grounds.

Gift Opportunities

There are several specific gift opportunities to provide you with the unique chance to designate your contribution to a particular portion of the project or dedication in memory of a family member or loved one:

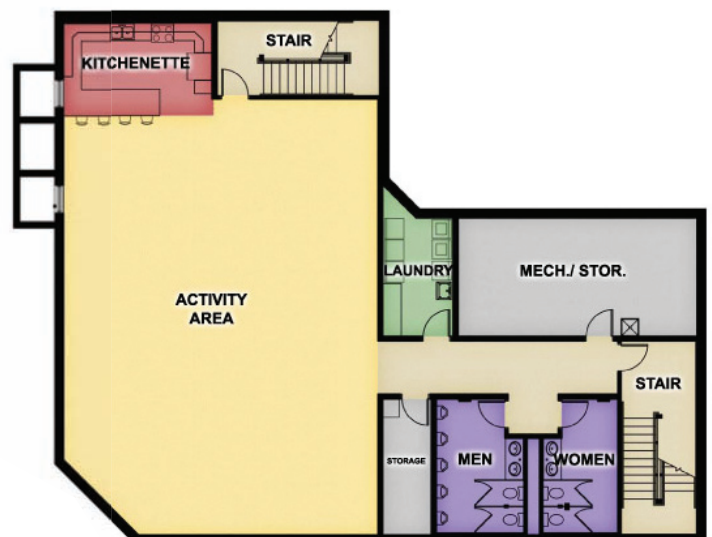
<u>Item</u>	<u>Pledge Amount</u>	<u>Item</u>	<u>Pledge Amount</u>
Greek Columns (6)	\$5,000 ea	Janitors Room	\$5,000
Patio	\$15,000	Dining Room	\$20,000
Front Entry/Foyer	\$20,000	Ritual Closet	\$5,000
Mail Room	\$7,500	Kitchen	\$20,000
Entertainment Room	\$20,000	Laundry Room	\$10,000
Senior Room	\$10,000	Bedrooms (11)	\$7,500 ea
Chapter Room	\$30,000	Basement Common Room	\$25,000
Chapter Room Fireplace	\$25,000	Basement Kitchenette	\$15,000
Sand Volleyball Court	\$20,000	Stairways (2)	\$5,000 ea



First Floor Plan



Second Floor Plan



Lower Level Plan